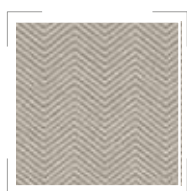


## Herringbone

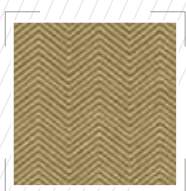
A printed fabric with a soft feel suitable for use in Hotels, Healthcare, and leisure. These fabrics can be co-ordinated with our other ranges.



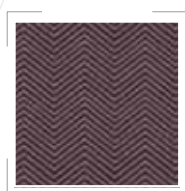
almond



bark



bisque



heather



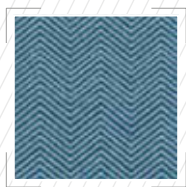
mink



mustard



nutmeg



ocean



olive



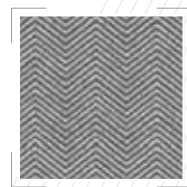
oyster



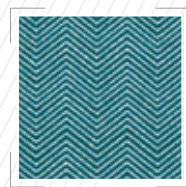
ruby



sage



steel



teal

Care and Leisure Contract Furnishing Fabrics - for use in Healthcare Environment

**Fabric Composition:** 100% Filament Polyester, treated with fluorocarbon & Microporous Polymers and Flame Retardant.

**Flame Retardant:** BS5852 0 & 1, BS5852 Crib 5

**Breathable:** Moisture Vapour Permeable BS3546 65%

**Waterproof:** Hydrostatic Head BS3424 1 Metre

**Martindale Abrasion:** > 40,000

**Tear Strength:** BS4303 (Severe Contract)

**Tensile Strength:** BS EN 150 13934 (Severe Contract)

**Urea Resistance:** BS 3424 Part 19 No Deterioration after 24 hrs 5.5PH, 8.8PH Urea Soak

**Flex Text:** BS 4818 no change after urea soak & 5000 flex's

**Antibacterial / Antifungal:** Will not support microbial growth including: Aspergillus Niger, E Coli, Altinata, Salmonella, Penicillium, Staphylococcus Aureus, Cladosporium, Herbarism.

### Cleaning & Maintenance

- Vacuum Frequently to keep colours fresh and prolong wear.
- Use soap and warm water for ordinary soiling.
- For Stubborn stains use antiseptic cleaning agents or a safe solvent base or cleaner or Mineral Spirit.
- Full immersion in water is not recommended.
- Do not Dry Clean or Tumble Dry.
- Wiping and hang drying is the best method.